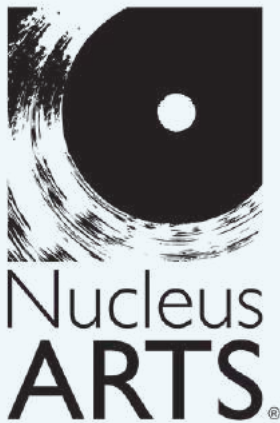
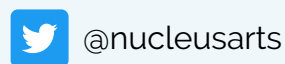
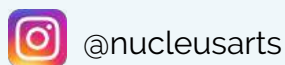


NUCLEUS ARTS NEWS

AUTUMN 2022



No:
01634 812108
Email:
original@nucleusarts.co.uk
Website:
nucleusarts.com



OVERVIEW

Welcome to the Nucleus Arts Summer Newsletter, covering September, October and November 2022!

Read on to discover upcoming exhibitions, creative workshops, puzzles and more.



MEDWAY FUN PALACE IS BACK!

WHAT IS FUN PALACE?

Based on a never-built idea from theatre director Joan Littlewood and architect Cedric Price, the first Fun Palaces took place in the UK and worldwide in October 2014, when 138 venues, locations, communities and groups created their own local events. Over 3000 people took part in organising these events, many of them as volunteers, and approximately 40,000 people attended Fun Palaces in person, while tens of thousands more engaged with them online.

Fun Palaces are about working with and from our own communities, creating events that bring together arts and sciences – but above all PEOPLE – to work together, create together, have FUN together, and in doing so, build our own communities, from the grassroots up.

Nucleus Arts are partnering with Medway Council and the Pentagon Shopping Centre to make an exciting community event! This celebration of community, art (in all its forms) and science is built by local people for local people.



WHEN

Medway Fun Palace 2022 is Saturday 1st October, 10am to 4pm.

WHERE

The Pentagon Shopping Centre, Chatham. Locations and timetable to come, keep an eye on our social media and website.

Find out how YOU can get involved in our Community Engagement section of the newsletter!

NUCLEUS ARTS NEWS



COMMUNITY SEWING PROJECT - MEDWAY HELP FOR UKRAINIANS

Our Family Quilt' is a community project that celebrates the journey of Ukrainians coming to Medway. If you would like to take part, pick up a leaflet from us or at your local library. Once you've made your square you can drop it into Nucleus Arts reception.

There is no special requirements for what fabric you use or how many squares you would like to make, as long as the squares are 6 1/2 x 6 1/2 inches. There will be an exhibition of the finished quilt at the Halpern Gallery early next year!



We've already received our first set of squares for the project from textile artist Caroline McCarthy, a great example of what they're looking for. We will also have a sewing table at Medway Fun Palace where people can learn how to make one!

PHOTOS FROM CHATHAM CARNIVAL



OUR GALLERIES

HALPERN
GALLERY



TWO YEARS IN CONFINEMENT

1st - 7th September

The theme of the exhibition 'Two Years in Confinement' is about coping with world events, with Covid and with cancer. More than 40 works have a range of styles and mediums and are presented as a sequential journey in time, events and emotion.

All Welcome



LITHUANIAN COMMUNITY ART

8th - 14th September

This exhibition presents the creative works of a group of Lithuanians from around the Medway towns. Images, colours, moods play in the works. They are the stories of the authors life experiences.

All Welcome



DON'T THINK, BUT LOOK!

15th - 28th September

An exhibition by Austin Fernando.

All Welcome



PICTURES FOR THE BEEHIVE, ROADSHOW 2022

29th September - 5th October

A touring exhibition of portraits, mostly drawings, of the people who attend The Beehive Centre in Dorset. They have physical and learning disabilities and for most of them it is the first time anyone has ever drawn or painted them...

All Welcome

OUR GALLERIES

HALPERN
GALLERY



HIDDEN WOMEN

6th - 19th October

Duende's fourth exhibition as a group of women whose aim is to make known, empower and celebrate remarkable women past and present who have been ignored by history. There will be a catwalk event with work from design students from UCA as well as a very special guest from the world of fashion!

All Welcome



GHOST

20th October - 2nd November

Enter if you dare...

An immersive haunting experience.

Please be advised this experience is unsuitable for children and those of a nervous disposition. **WARNING** - contains the use of strobe lighting effects and flashing torchlights.

All Welcome



COLONY

3rd - 16th November

Colony members work in a variety of mediums: Painting, Photography and Collage but they share a passion for art and culture and believe in producing work to the highest standards.

Preview 3rd November, 5pm - 7pm.

All Welcome



ROCHESTER AND WEST KENT ART SOCIETY

17th - 30th November

You will enjoy a wide variety of subjects in a range of media and styles, by a long established group of talented local artists. This exhibition will include the competition entries for our new Lloyd Land Rochester Prize, in memory of our recently departed member and his work, which was often inspired by this historic area. **All Welcome**

OUR GALLERIES

HALPERN GALLERY
POP



RANDOM IDEAS THAT INTEREST ME

31st August - 6th September

An exhibition by SuZanne West.

All Welcome



A SENSE OF BEING - YVONNE WHITNELL

7th - 13th September

An exhibition of acrylic paintings inspired by what we see, bringing out diverse interpretations of the environment to form creative expressions of space, shape and colour, evoking out thoughts, feelings and emotion.

All Welcome



FIGURE

14th - 27th September

An exhibition by Jonathan Ash.

All Welcome



THE WITCHES GARDEN

28th September - 4th October

Val and Raven are two good friends who produce work individually but present together. Val works in fused glass whilst Raven's art is in mixed media. For their Autumn show they are planning on creating a mystical witchy experience.

All Welcome

OUR GALLERIES

HALPERN GALLERY
POP



ARTIFACT

5th - 11th October

Greta Citrons is an independent artist, currently specialising in fine line drawings that explore the mysteries of the mind and its interaction with reality beyond mundane perceptions. Artifact, will showcase a collection of the most significant symbols that impressed upon her psyche this year.

All Welcome



SOLOMON DADA

12th - 25th October

An exhibition by Solomon Dada.

All Welcome

**MORE EXHIBITIONS TO
COME THROUGHOUT
Summer**

**Keep an eye on our
website and social
media for updates!**

www.nucleusarts.com

OUR GALLERIES

MedwayArtBox

SEE WHAT WE'VE GOT COMING UP AND HOW YOU CAN GET INVOLVED:



15 August - 14 September

Greetings from Medway - A postcard art swap

We're inviting all artists - young and old - to gift a postcard size (A6) piece of art to MedwayArtBox, so it can travel the width and breadth of the UK or possibly the world!

Want to get involved? Take your postcard along to MedwayArtBox and hang it yourself or send it to the address on the next page.



14 September - 28 September

Blue Jelly

by Rachel // iPrintedThat

An interactive installation of cyanotype printed Jellyfish that rise and fall with the tides.



28 September - 12 October

Medway Fun Palace

An exhibition of work created at this year's Medway Fun Palace. All are invited to come to The Pentagon Centre, Chatham on 1 October to create your masterpiece and see it installed in MedwayArtBox. For more information visit www.nucleusarts.com/fun-palace

Located snugly between The Halpern Conservancy Building and the Guildhall Museum you will find MedwayArtBox: the smallest art gallery in Rochester.

The repurposed red BT Telephone Box is a place for artists and the local community to display and share their work and take part in creative projects and installations.

@MedwayArtBox on instagram, twitter & Facebook.

OUR GALLERIES

MedwayArtBox



12 October - 26 October

Zine Exhibition

by Johanna Coulson

An open exhibition where you're invited to choose a spine-tingling zine created by Medway born artist Johanna Coulson and find out about the inspiration behind the stories.



26 October - 9 November

by COLONY

A fringe show by Colony members. The main exhibition will also be showing at the Halpern Gallery, Chatham. Their work covers a variety of mediums: Painting, Photography and Collage.

SEND US YOUR WORK!

If you're an artist or organisation and have an idea that you'd like to see happen in MedwayArtBox then please email vanessa.crew@nucleusarts.co.uk We'd love to have a chat with you!



ALL postcards can be sent to Rachel Moore/iPrintedThat in Studio 7, The Halpern Conservancy, 15a High Street, Rochester.

Located snugly between The Halpern Conservancy Building and the Guildhall Museum you will find MedwayArtBox: the smallest art gallery in Rochester.

The repurposed red BT Telephone Box is a place for artists and the local community to display and share their work and take part in creative projects and installations.

@MedwayArtBox on instagram, twitter & Facebook.

COMMUNITY ENGAGEMENT



FUN PALACE'S

CALL OUT FOR MATERIAL

A sewing table for 'Our Family Quilt' will be featured at this year's Medway Fun Palace, where people will be invited to make squares to be given to Medway Help For Ukrainians.

We would love for you to donate any material you have, such as offcuts and leftover scraps, every bit will help!

Please bring all donations to the Nucleu Arts office at 272 High Street, Chatham.



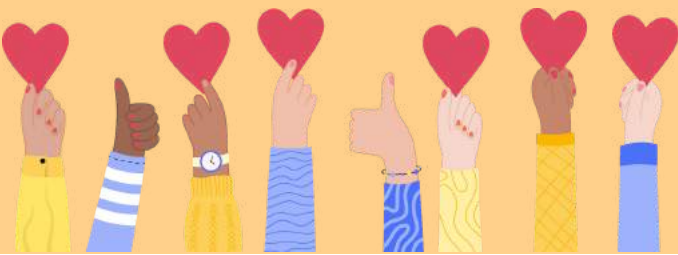
FUN PALACE'S

VOLUNTEERING

We are always looking for volunteers to join us on Fun Palace day, whether for a few hours or the whole day. Volunteering could involve manning stalls, assisting with creative activities, handing out magazines, or helping with set up and take down.

Volunteers will be eligible for time credits and a Nucleus Arts goodie bag!

If you would like to be involved in this creative, interactive family day, please email our Volunteer Coordinator, Beth, at beth.atkins@nucleusarts.co.uk before **25th September 2022**.



COMMUNITY ENGAGEMENT CONTINUED ...

We are hosting four FREE Creative Professional Development sessions for Medway teachers here at Nucleus Arts Chatham, starting on 19th September.

Sponsored by Child-Friendly Medway, each session will help bring more art knowledge and creative confidence to classrooms. Led by professional artists from Animate Arts Company, you will explore drawing, painting, the importance of creativity in education, and discover new artists.

To book, email charlotte.ralph@nucleusarts.co.uk

INSPIRE + DO

FREE professional development in primary art for teachers in Medway schools, sponsored by Child-Friendly Medway.

WHY IS CREATIVITY IMPORTANT?
Monday 19 September, 4-5.30pm

NOT THE USUAL ART SUSPECTS
Monday 26 September, 4-5.30pm

DRAWING TO LEARN
Monday 3 October, 4-5.30pm

PAINT!
Monday 10 October, 4-5.30pm

For more details and booking:
charlotte.ralph@nucleusarts.co.uk

animate
arts
company

Nucleus Arts

CHILD
FRIENDLY
MEDWAY

Medway
COUNCIL
Serving You

CHECK OUT ALL OUR REGULAR CREATIVE GROUPS!

Find out more and book your space at nucleusarts.com/whats-on

Please note that it is essential to book as we may not be able to accommodate drop ins.

YOUNG AT ART

SOCIAL ART

JUMP stART

CHAT! CONNECT! CREATE!

ADULT
GROUPS

KIDS &
TEENS
GROUPS

LEGO CLUB

MINI NUCLEUS

TEEN ART

DIGITAL TEEN ART

RESIDENT ARTIST NEWS

SPOTLIGHT - JONATHAN ASH



Hello there; I'm Jonathan Ash (also known as Ash) and have been a resident artist at Nucleus since 2018.

I am an acrylic artist and my colourblindness has given me quite a unique style - as I find it very difficult to blend colours as I cannot see the nuances of difference in shade, I instead paint in layers of colour. I have realised that I see more in tones and contrast than subtle colour and so that's how I choose my palette.



Perhaps surprisingly, I have only been painting since 2017 and sketching with pencil for a year before that. Art had been something I had always enjoyed as a consumer, and I studied French Impressionism to Dadaist Art as part of my degree at the University of North Wales. However, I never felt I was able to produce anything "art-worthy" (and I hear that a lot when I am chatting to people about art - remember whatever you produce is unique; no-one else can create it).



After a very difficult period and a number of mental and physical health crises, I was desperate for something that would shut out the noise and let me concentrate on one thing. It so happened in late 2016 I had the opportunity to follow a college course, an NVQ, in Art; I had the most amazing tutor who focussed me on faces and figure drawing and without exaggerating, this saved my life. It continues to save my life every day. And Nucleus Arts plays a huge role in this - I have had support at the darkest times from the team here and they show a great faith and belief in me.





I have had a number of solo exhibitions in Medway, Dartford, Soho, Gravesend and Faversham as well as being part of many group shows; I am fortunate to have sent art to every continent across the world (except Africa - still working on it!) and to have been invited to provide talks and workshops for a number of art societies and establishments.

I have been commissioned many times and have work in foyers on Rochester Esplanade and St Mary's Island.



Art has taken me to some place I would have never imagined - I had the pleasure of meeting the activist and writer Mark Segal and the general secretary of UNISON, Christine McAnea, as part of the commemoration of 50 years since the Stonewall Riots. I have a weekly radio show, "Cloudbase" on Medway Pride Radio and so many more musical and artistic events (often dressed as a cowboy or a monkey, it is true).

I have made very firm friends as part of the Nucleus Arts team, people who have shown me such compassion and care; this is a special place to be and I am so pleased that I am a part of it.

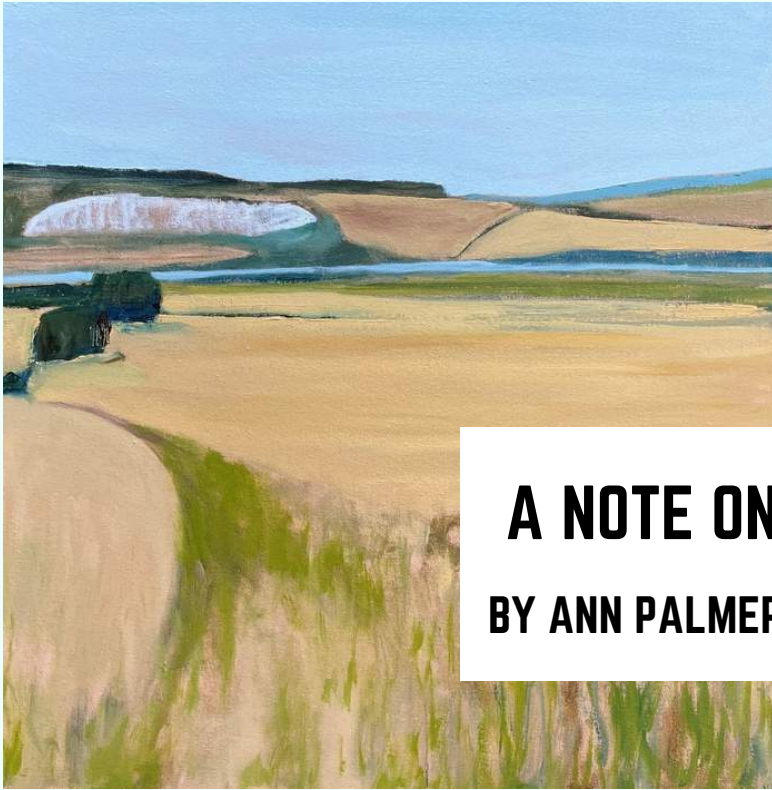
Find out more at JonathanAshArt.com and visit JonathanAshArt.Etsy.com for a bit of shopping.

EXHIBITION NEWS

I have an exhibition from 15th to 27th September at The Halpern Pop, Conservancy Building, Rochester called "Figure", and another in December at Naked Products Ltd, Rochester High St. You can also find me at the Rochester Vintage and Artisan Market every second Saturday of the month, also on Rochester High St.



RESIDENT ARTIST NEWS



A NOTE ON INSPIRATION

BY ANN PALMER

Painting: work in progress

This summer I am working towards my solo exhibition in the Halpern Pop (November 8-23). I have been inspired by Vanessa's (Nucleus Arts Weekend Coordinator) suggestion I do something different, as well as David Mankins success as an abstract painter in Cornwall.

I have been attending some online courses from St Ives School of Painting, in particular I have found Liz Hough's 'Developing On – a guide to abstraction' most interesting. The other artist to inspire me was Martha Holmes who has a minimalist approach to painting the landscape, concentrating on shapes; I have found this very useful in my new project.

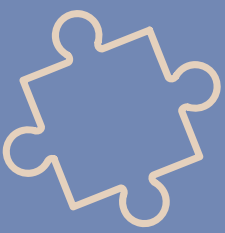
I am working on a new series of work, harping back to some plein air painting I did about 5 years ago in the field above Wouldham. The Exhibition will be called Barley Fields and will include some old work as well as my new paintings.

Revisiting the fields has led me to explore the work of Joan Eardley in more detail and I have a wonderful video from St Ives - A Painter's Painter with artist Jill Eisele .

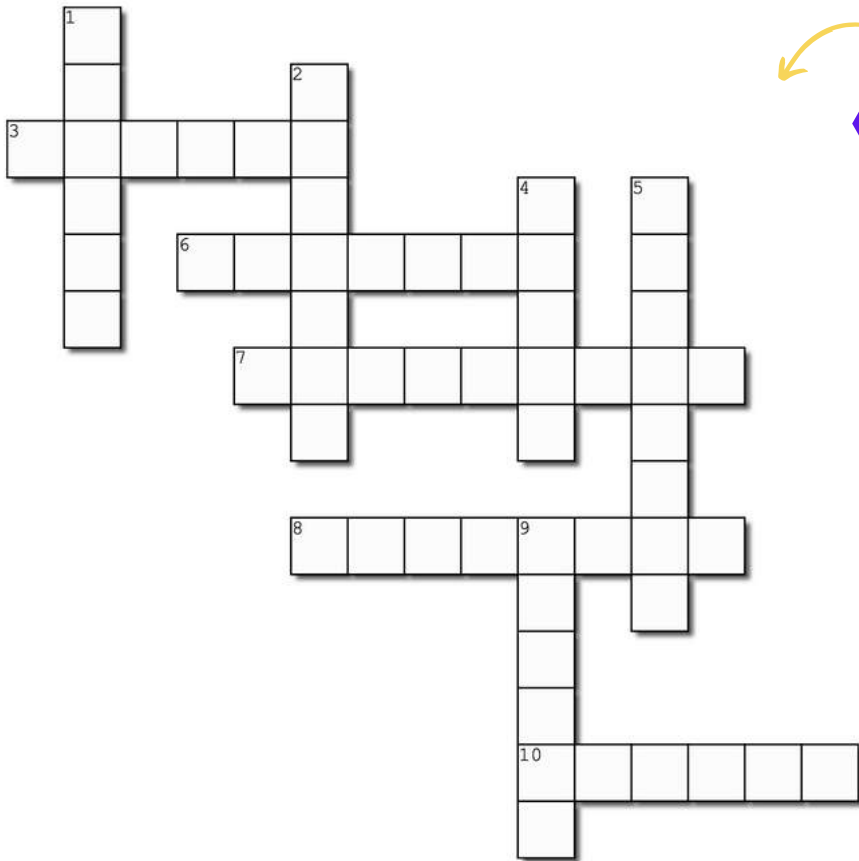
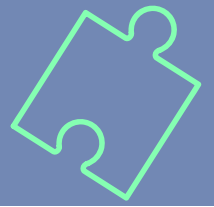
My new work takes in the changing nature of the fields during the harvest this summer; this is a challenge for me but I'm enjoying returning to landscape for this project. What is interesting to me as I develop this work is that my experience in oils and plein air work together with all the hints and tips I gleaned from my courses, is consolidating in my new work. Don't expect a huge body of work! I am taking it slowly and hope to have three or four large paintings on canvas and some smaller pieces on cradled panel.

AUTUMN COLOURING





PUZZLES



Around the World



Riddle me this...
You can easily touch me, but not see me. You can throw me out, but not away.
What am I?



Across

- 3. Louis XIX was the king of this country for only 20 minutes, the shortest ever reign
- 6. Home to one of the largest butterflies in the world, the Homerus Swallowtail
- 7. This Southeast Asian country is the world's largest island nation
- 8. Home to Caño Cristales, a river also referred to as the "liquid rainbow"
- 10. This country has the longest coastline in the world; 125,567 miles

Down

- 1. Oslo is its capital city
- 2. Everyone who lives in this European country can attend college tuition-free, even non-natives
- 4. The flag of this country depicts a red dragon
- 5. In 1974, a 3.2 billion-year-old hominin (early human) fossil was found by paleoanthropologist Donald Johanson in this country
- 9. Birthplace of artist Frida Kahlo

CAR MAKERS



C _ D _ L _ A _
 _ U _ I
 B _ I _ K
 _ A _ D R _ V _ R
 T _ Y _ T _

M _ L _ R _ N
 _ I _ R _ E _
 P _ N _ I _ C
 _ O _ D _
 D _ T _ U _



WORD SEARCH

MUSICIANS WITH ONE WORD NAMES

B	E	F	I	L	T	S	E	W	A	E	E	K	L
B	S	L	R	S	Y	E	R	E	S	E	Q	I	D
A	O	R	E	W	D	U	C	E	P	Q	U	S	E
N	N	E	P	E	S	S	I	N	I	D	E	S	A
A	E	A	I	E	N	D	A	R	O	S	E	I	P
N	C	S	N	T	N	N	Y	C	Y	Y	N	E	T
A	N	E	K	I	B	L	O	N	D	I	E	D	K
R	I	U	A	E	L	V	I	S	Q	D	S	B	R
A	R	M	U	S	E	R	Y	O	A	S	I	S	B
M	P	E	S	S	Y	A	L	P	D	L	O	C	I
A	B	P	T	B	I	P	A	R	A	M	O	R	E
I	I	D	E	E	C	A	D	E	L	E	T	N	A
S	M	S	P	S	N	I	R	V	A	N	A	C	R
S	D	A	S	S	A	A	B	B	A	L	O	K	Y

ABBA
BLONDIE
SWEET
PARAMORE
STEPS
PINK
BANANARAMA
QUEEN
OASIS
ELVIS
COLDPLAY
BEYONCE
ADELE
MUSE
PRINCE
KISS
WESTLIFE
NIRVANA

Play this puzzle online at : <https://thewordsearch.com/puzzle/3903460/>





PUZZLE ANSWERS



Riddle me this...

Your Back



CAR MAKERS

CADILLAC	MCLAREN
AUDI	CITROEN
BUICK	PONTIAC
LAND ROVER	HONDA
TOYOTA	DATSUN



1 n
o
5 f r a n c e
w
a
y
2 g
r
6 j a m a i c a
a
7 i n d o n e s i a
y
s
4 w
5 e
t
h
8 c o l o m b i a
e
a
x
i
10 c a n a d a
o

B	E	F	I	L	T	S	E	W	A	E	E	K	L
B	S	L	R	S	Y	E	R	E	S	E	Q	I	D
A	O	R	E	W	D	U	C	E	P	Q	U	S	E
N	N	E	P	E	S	S	I	N	I	D	E	S	A
A	E	A	I	E	N	D	A	R	O	S	E	I	P
N	C	S	N	T	N	N	Y	C	Y	N	E	T	
A	N	E	K	I	B	L	O	N	D	I	E	D	K
R	I	U	A	E	L	V	I	S	Q	D	S	B	R
A	R	M	U	S	E	R	Y	O	A	S	I	S	B
M	P	E	S	S	Y	A	L	P	D	L	O	C	I
A	B	P	T	B	I	P	A	R	A	M	O	R	E
I	I	D	E	E	C	A	D	E	L	E	T	N	A
S	M	S	P	S	N	I	R	V	A	N	A	C	R
S	D	A	S	S	A	A	B	B	A	L	O	K	Y

ROCHESTER to CHATHAM

ARTS TRAIL

A WALKING GUIDE TO GALLERIES

	Walking trail
	Pedestrians only
	Main Road
	Minor Road
	Buses Only
	Green Space
	River
	TIME/DISTANCE: 30 mins/1.5 miles

GALLERY INFORMATION

1. THE HALPERN POP

at THE HALPERN CONSERVANCY BOARD BUILDING

15a High St, Rochester ME1 1PY

OPEN: Mon-Sun 10am-4pm

01634 812108 original@nucleusarts.co.uk

www.nucleusarts.com/halpern-pop

@thehalpernpop accessible • FREE entry

2. ROCHESTER ART GALLERY

at MEDWAY VISITOR INFORMATION CENTRE

95 High St, Rochester ME1 1LX

OPEN: Tues-Sat 10am-5pm

@rochesterartgallery accessible • FREE entry

3. STORE 104

104 High St, Rochester ME1 1JT

OPEN: Mon-Sat 10am-5pm, Sun 11am-4pm

01634 843881 hello@store104.co.uk

www.store104.co.uk

@store.104 • FREE entry

4. FRANCIS ILES GALLERIES

103 High St, Rochester ME1 1LX

OPEN: Mon-Sat 10am-5pm

01634 843222 gallery@francis-iles.com

www.francis-iles.com

@francis.iles.gallery • FREE entry

5. MEDWAY ADULT EDUCATION GALLERY

at JASPER'S COMMUNITY CAFÉ

Rochester Community Hub (above Rochester Library),
High St, Rochester ME1 1EW. OPEN: Mon-Fri 9.30am-3.30pm

@medwayadulted accessible • FREE entry

6. INTRA

337-341 High St, Rochester ME1 1DA

OPEN: Windows gallery viewable 24 hours 7 days a week
Occasional exhibitions inside by appointment.

01634 753299 intraarts@gmail.com www.intraarts.org

@intraarts @intra_arts accessible • FREE entry

7. THE GALLERY at NAKED PRODUCTS Co.

388 High St, Rochester ME1 1DJ

OPEN: Sun-Mon 10am-4pm, Tues-Sat 10am-6pm

01634 786061 www.naked-products.co.uk

@nakedproductsco • FREE entry

8. THE RIVERSIDE GALLERY at SUN PIER HOUSE

Medway St, Chatham ME4 4HF

Closed for refurbishment - reopening in 2022

01634 401 549 info@sunpierhouse.co.uk

www.sunpierhouse.co.uk

@SunPierHouse • FREE entry

9. THE HALPERN GALLERY at NUCLEUS ARTS CENTRE

272 High St, Chatham, ME4 4BP

OPEN: Mon-Sat 10am-4pm

01634 812108 original@nucleusarts.co.uk

www.nucleusarts.com/halpern-chatham

@thehalperngallery accessible • FREE entry



SUPPORT



MENTAL HEALTH SUPPORT

The following websites provide information on how to protect your mental health at this time. Click on the links to take you to the website:

- <https://www.bbc.co.uk/news/health-51873799>
- https://www.newscientist.com/article/mg24632790-900-7-mental-health-expert-tips-on-how-to-cope-with-the-covid-19-pandemic/?fbclid=IwAR1m9gtV9mZ2-binxmWcy-hr-oOU4k12K7SpUY2CeG7jmKkj_IVsYJO6DVs
- <https://www.nhs.uk/oneyou/every-mind-matters/top-tips-to-improve-your-mental-wellbeing/>
- <https://www.mind.org.uk/information-support/coronavirus/coronavirus-and-your-wellbeing/>
- <https://www.time-to-change.org.uk/coronavirus>



take care
of your mind



GENERAL SUPPORT THROUGH COVID-19

The following websites provide information for further support at this time, including access to food and accommodation. Click on the links to take you to the website:

- <https://www.gov.uk/find-coronavirus-support>
- <https://www.citizensadvice.org.uk/work/coronavirus-if-youre-self-employed/>
- <https://www.moneysavingexpert.com>
- <https://www.medway.gov.uk/coronavirussupport>